



The background features a detailed architectural floor plan of a house. Key elements include a 'TWO CAR GARAGE' (20' x 21'), a 'FOYER', 'LAUN' (laundry), 'LAV' (lavatory), 'BED RM 2' (10' x 12'), and 'CLO' (closets). Dimensions such as '56'-8"', '16'-0"', and '20'-0"' are visible. A 'STONE WALL' is also indicated. The drawing is overlaid with a semi-transparent white box containing the title text.

Nevrištec

per Quartetto d'Archi

2006

*a commission of Deutschlandfunk and Philharmonie
Essen*

A desk with a lamp, a ruler, and a pen. The background is a brick wall. The desk is white and has a lamp on the left, a ruler on the right, and a pen on the right. The text is in the center of the desk.

Nevrištec

- when you change the font of a text, sometimes the visual impact changes completely, while its content remains completely the same

A desk with a lamp, a ruler, and a pen. The background is a brick wall. The desk is white and has a lamp on the left, a ruler on the right, and a pen on the bottom right. The text is written on the desk.

Nevrištec

- when you change the font of a text, sometimes the visual impact changes completely, while its content remains completely the same

A desk with a lamp, a ruler, and a pen. The background is a brick wall. The desk is white and has a lamp on the left, a ruler on the right, and a pen on the bottom right. The text is written in a cursive font on the desk.

Nevrištec

- *when you change the font of a text, sometimes the visual impact changes completely, while its content remains completely the same*

A desk with a lamp, a ruler, and a pen on a brick wall background. The lamp is in the top left corner, and the ruler and pen are in the bottom right corner. The background is a brick wall.

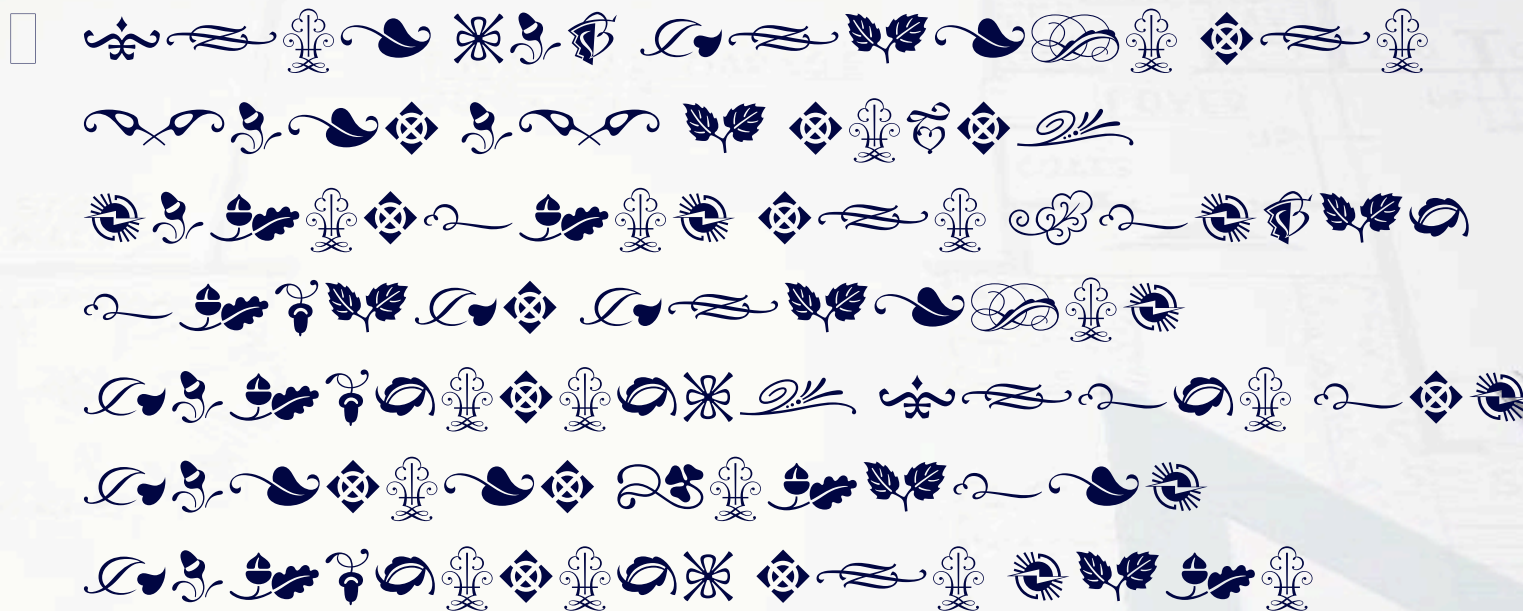
Nevrištec

- ***when you change the font of a text, sometimes the visual impact changes completely, while its content remains completely the same***

Nevrištec

- ωην ψου χηανγε τηε φοντ οφ α τεξτ, σο μετιμεσ τηε πισυαλ ιμπαχτ χηανγεσ χο μπλετελψ, ωηιλε ιτσ χοντεντ ρεμαιοσ χ ομπλετελψ τηε σαμε

Nevrištec



Nevrištec



Nevrištec

The image displays a guitar tablature for the song "Nevrištec". The tablature is organized into six horizontal rows of guitar fretboard diagrams. Each diagram shows the fret numbers for each string (1-6) and includes various musical notations such as chords, melodic lines, and technical markings. Key markings include "4fr." (fourth fret), "3fr." (third fret), and "x" (muted string). The tablature is presented on a white sheet of paper with a faint grid pattern, set against a background of a brick wall and a desk lamp. Two red markers are visible on the right side of the page.

The background of the slide is a photograph of a desk. In the top left corner, there is a silver desk lamp with a white shade. The wall behind the desk is made of reddish-brown bricks. The desk surface is covered with white paper that has faint architectural drawings and blueprints on it. Two pens, one red and one silver, are lying on the desk in the bottom right area.

Nevrištec

- Physical gesture => musical gesture
(characters, words, phrases, verses)
- Font changes <= changing support

//

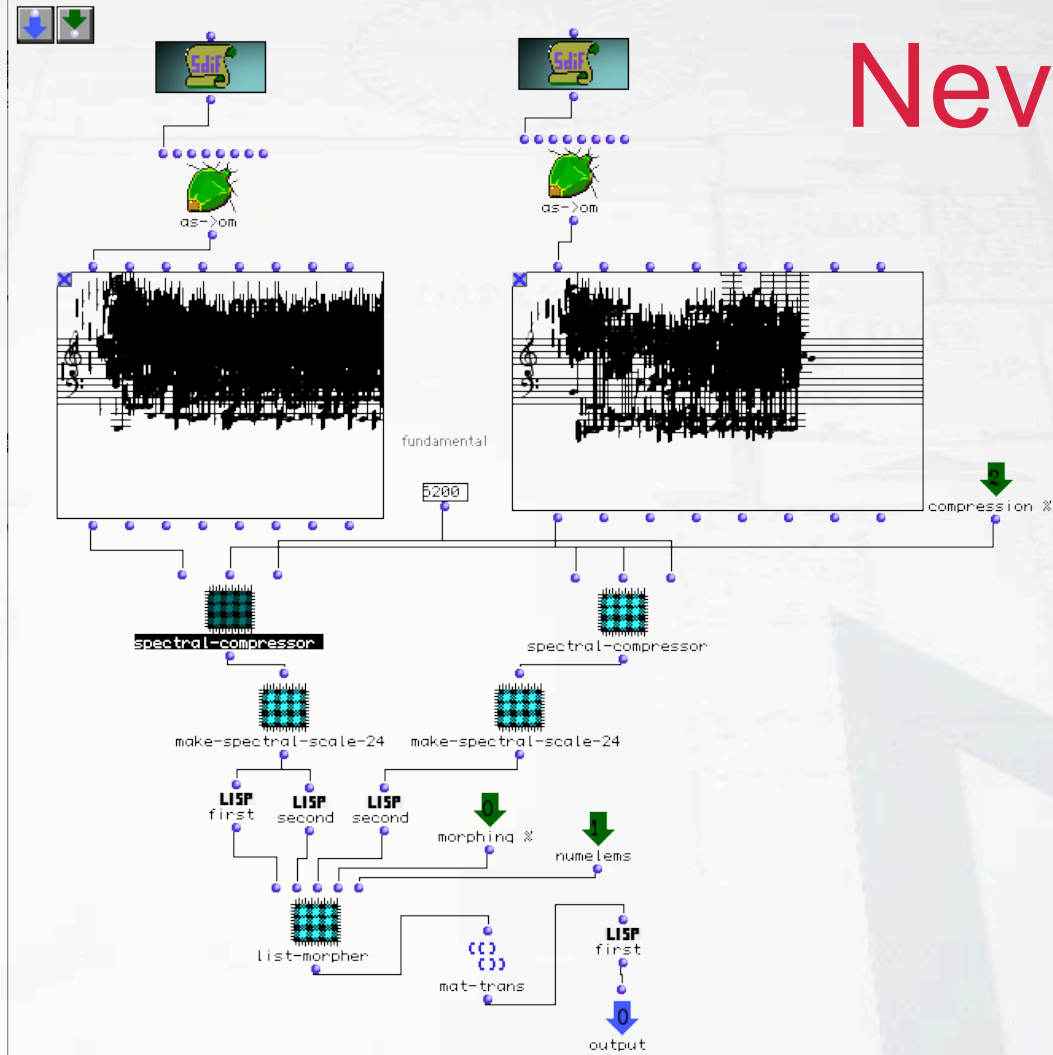
Musical gesture changes <= changing
harmonic spectrum

A desk with a lamp, a ruler, and a pen, with a brick wall in the background. The scene is dimly lit, with the lamp providing the main source of light. The desk is covered with a white sheet of paper, and a ruler and a pen are visible on the right side. The background is a brick wall.

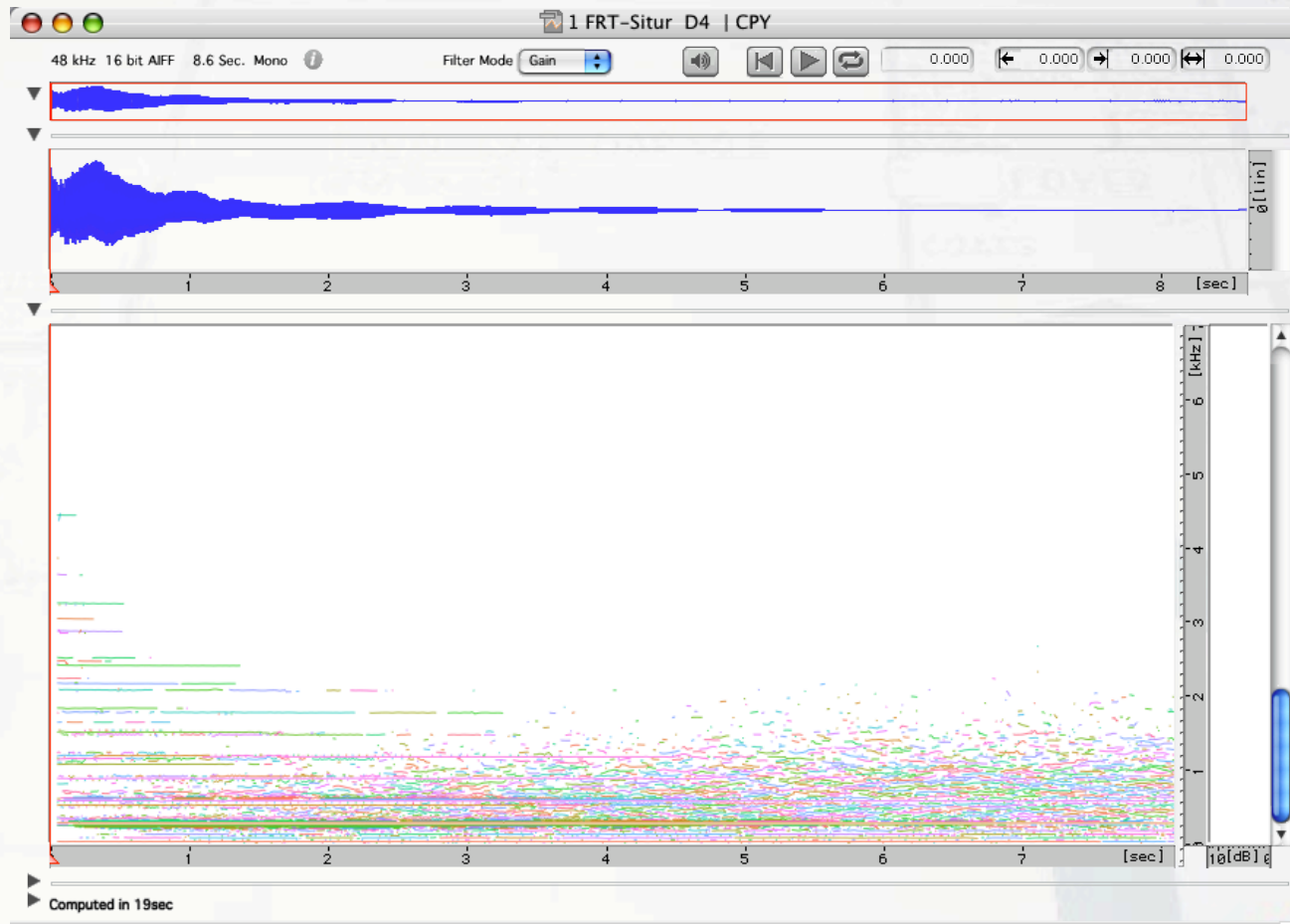
Nevrištec

- Morph (i.e. interpolate) 2 spectra
- Compress resulting spectrum
- Create scale from this compressed result

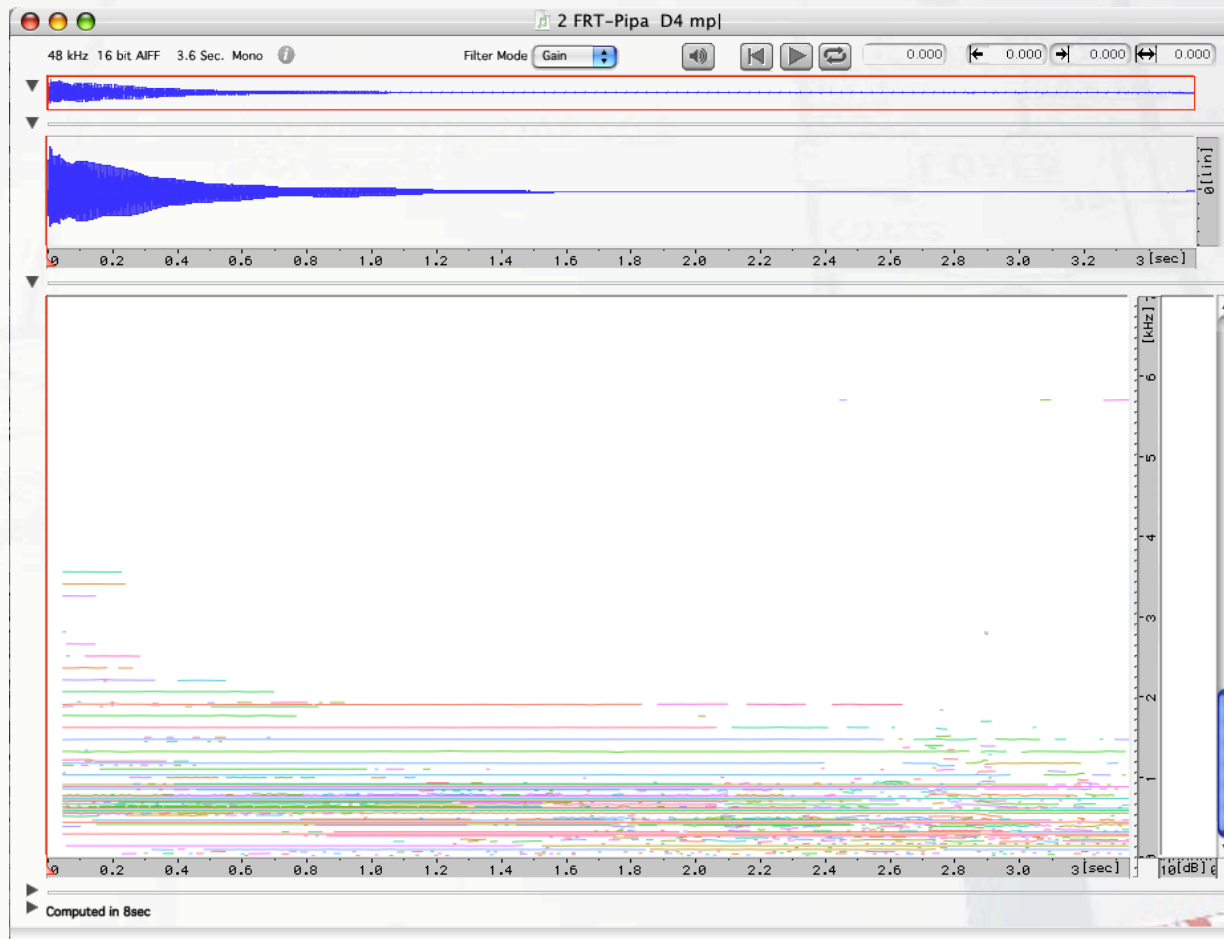
Nevrištec



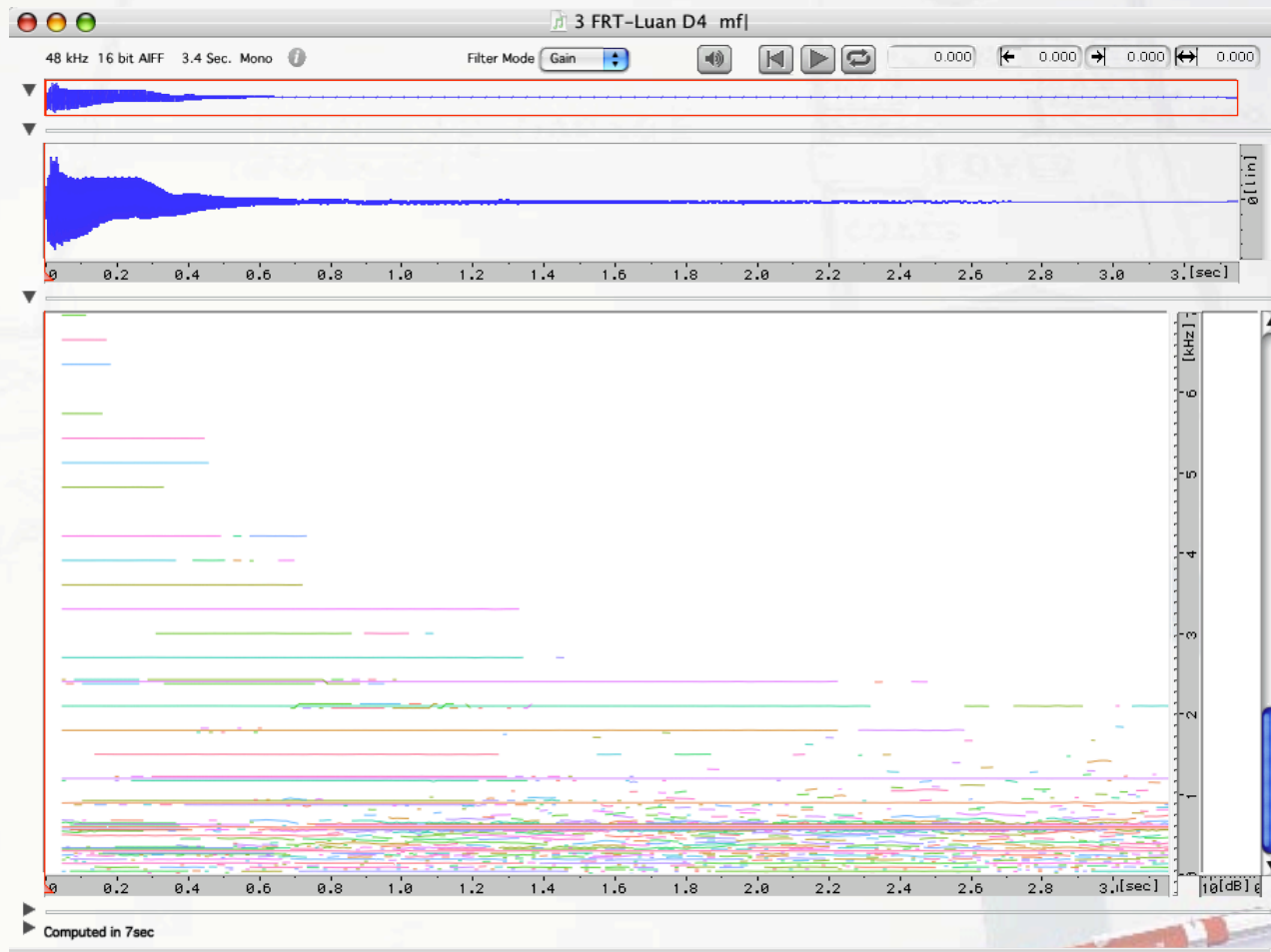
Nevrištec



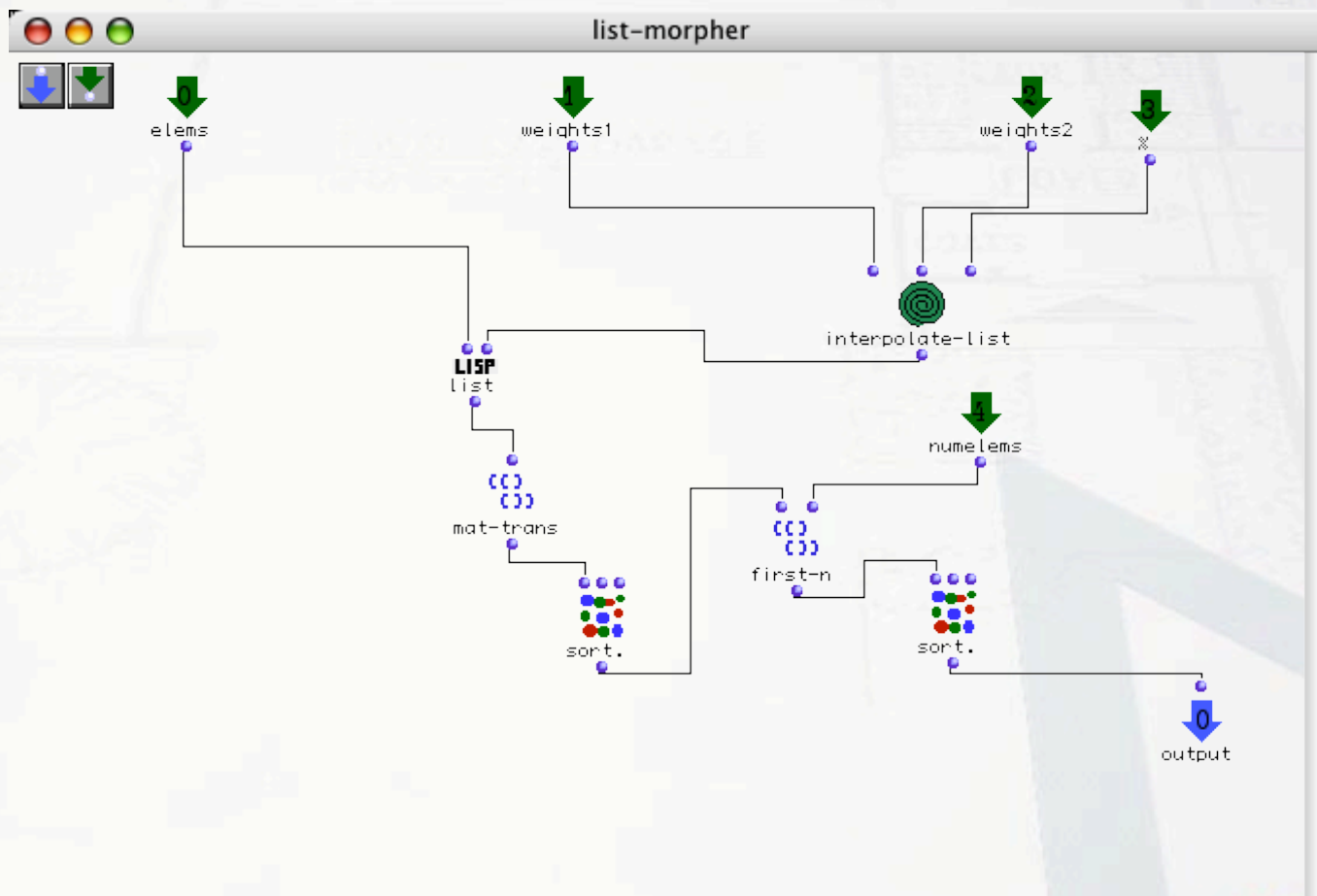
Nevrištec



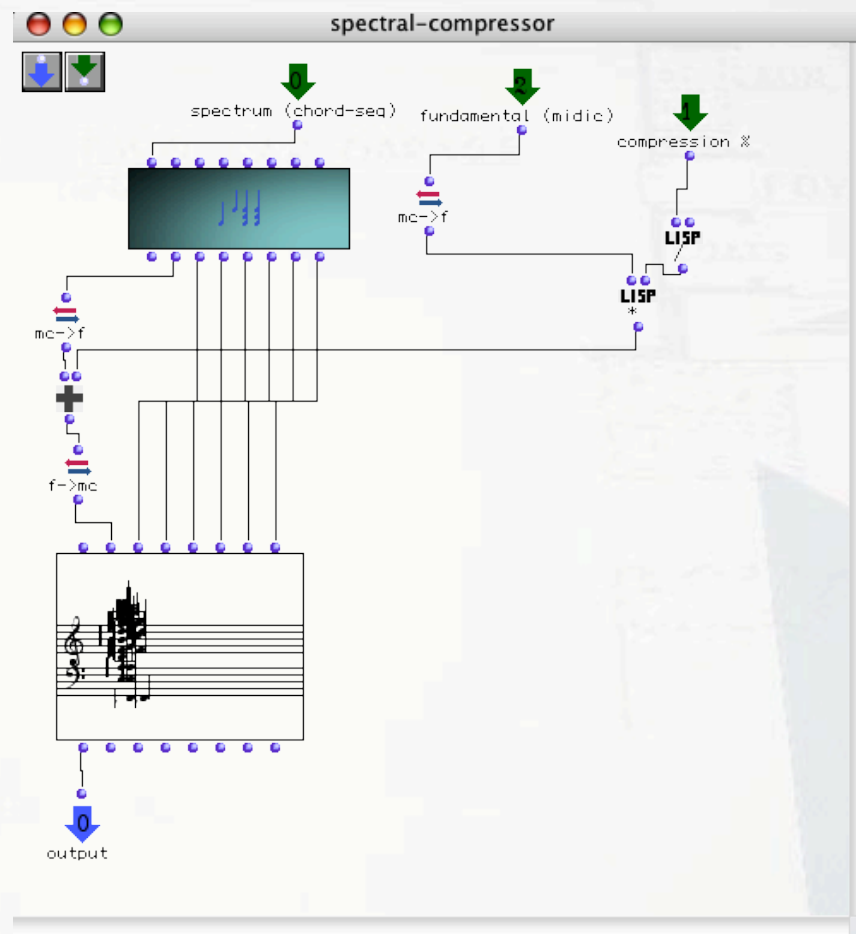
Nevrištec



Nevrištec



Nevrištec



Nevrištec

The image displays a musical score for the piece "Nevrištec". It consists of three systems of music, each with a bass clef on the left and a treble clef on the right. The notes are numbered 1 through 18 across the three systems. The first system covers measures 3 to 18, the second system covers measures 2 to 17, and the third system covers measures 1 to 16. The notes are written in a simple, clear style, with some notes having accidentals (sharps and flats). The score is presented on a white background with a faint grid pattern, and the entire scene is set against a brick wall background with a desk lamp and markers visible.

Nevrištec

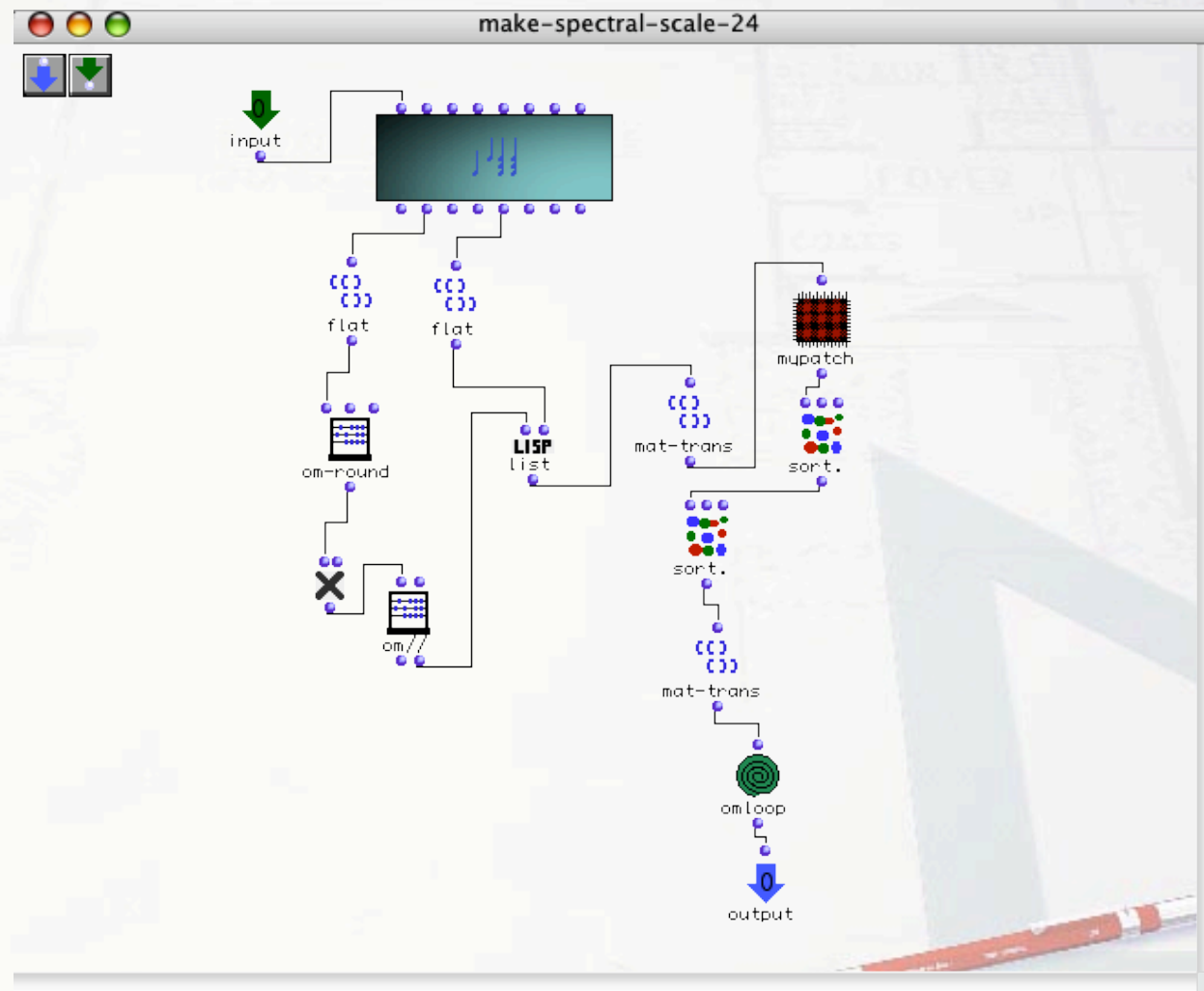
3 3.5 4

2 2.5 3

1 1.5 2

Detailed description: The image shows three staves of musical notation for the piece 'Nevrištec'. Each staff begins with a bass clef. The first staff has notes G2, A2, and B2 with fingerings 3, 3.5, and 4 above them. The second staff has notes G2, A2, and B2 with fingerings 2, 2.5, and 3 above them. The third staff has notes G2, A2, and B2 with fingerings 1, 1.5, and 2 above them. The notes are positioned on the second, third, and fourth lines of the staves respectively. The entire notation is enclosed in a blue rectangular border.

Nevrištec





Nevrištec

- Spectra -> Scordatura
- Gestures -> quickly changing dynamics
-> notation with changing note sizes

Nevrištec

- Scordatura



Nevrištec

- Dynamics





Nevrištec

- Title is an onomatopoeia for the overall sound evolution of the piece. Which could be described as "4 musicians carving a text on a changing support"